









Prior to installation: You **must** have a Windows machine to run ArcGIS Desktop (ArcMap)

How to **Download**, **Install** and **Authorize** ArcGIS Desktop (ArcMap)

1. **Download** ArcGIS Desktop Software from the location provided to you. This is the “ArcGIS_Desktop_108....” application file seen in the image below.

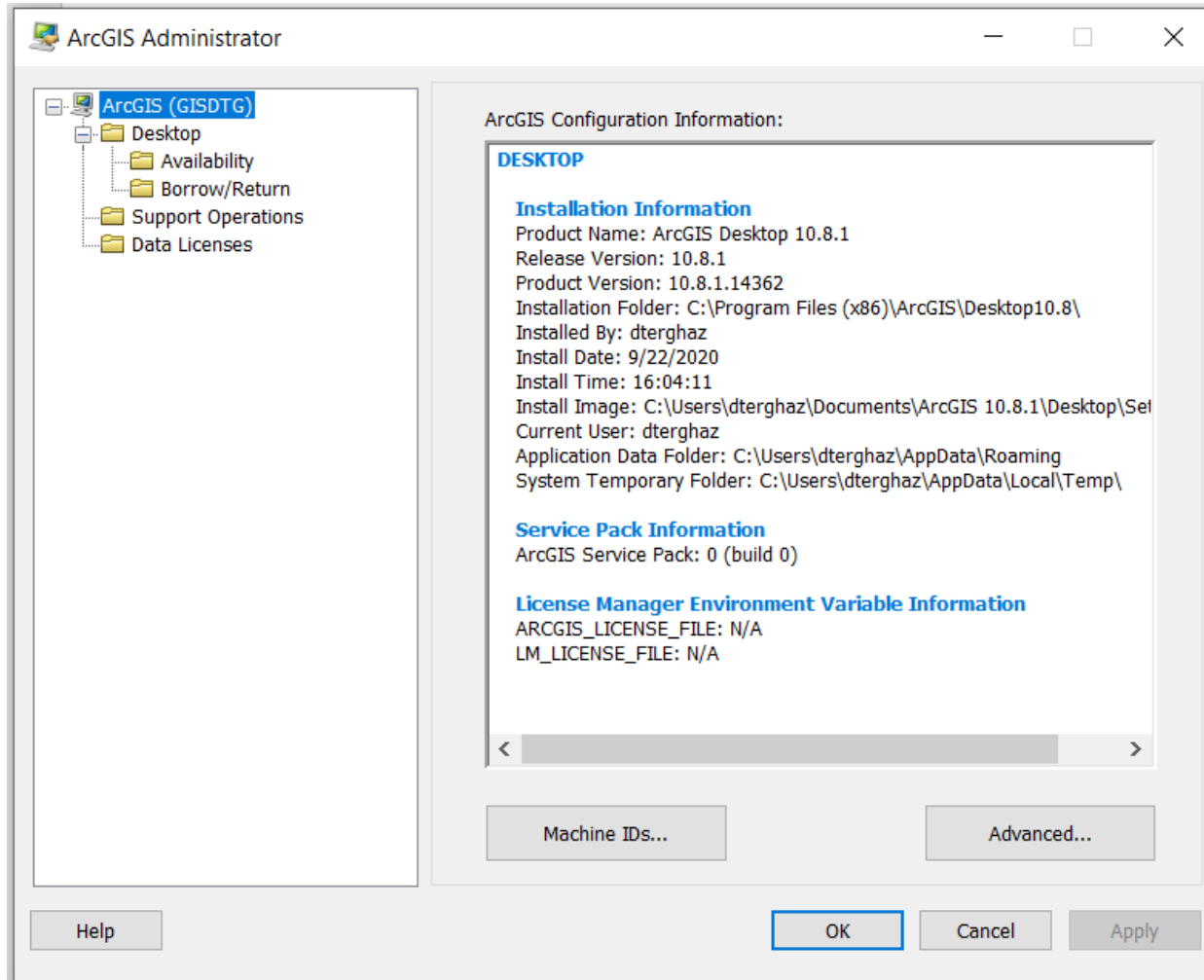
Name	Status	Date modified	Type	Size
 ArcGIS_Desktop_108_172737		1/7/2021 11:13 AM	Application	1,033,957 ...
 EducationSiteArcGISDesktop_SingleUse_990778		1/7/2021 11:31 AM	Esri Client Provisio...	1 KB

2. **Download** the ArcGIS Desktop license provisioning file from the location provided to you. This is the “EducationSiteArcGISDesktop...” 1KB file seen in the image below.

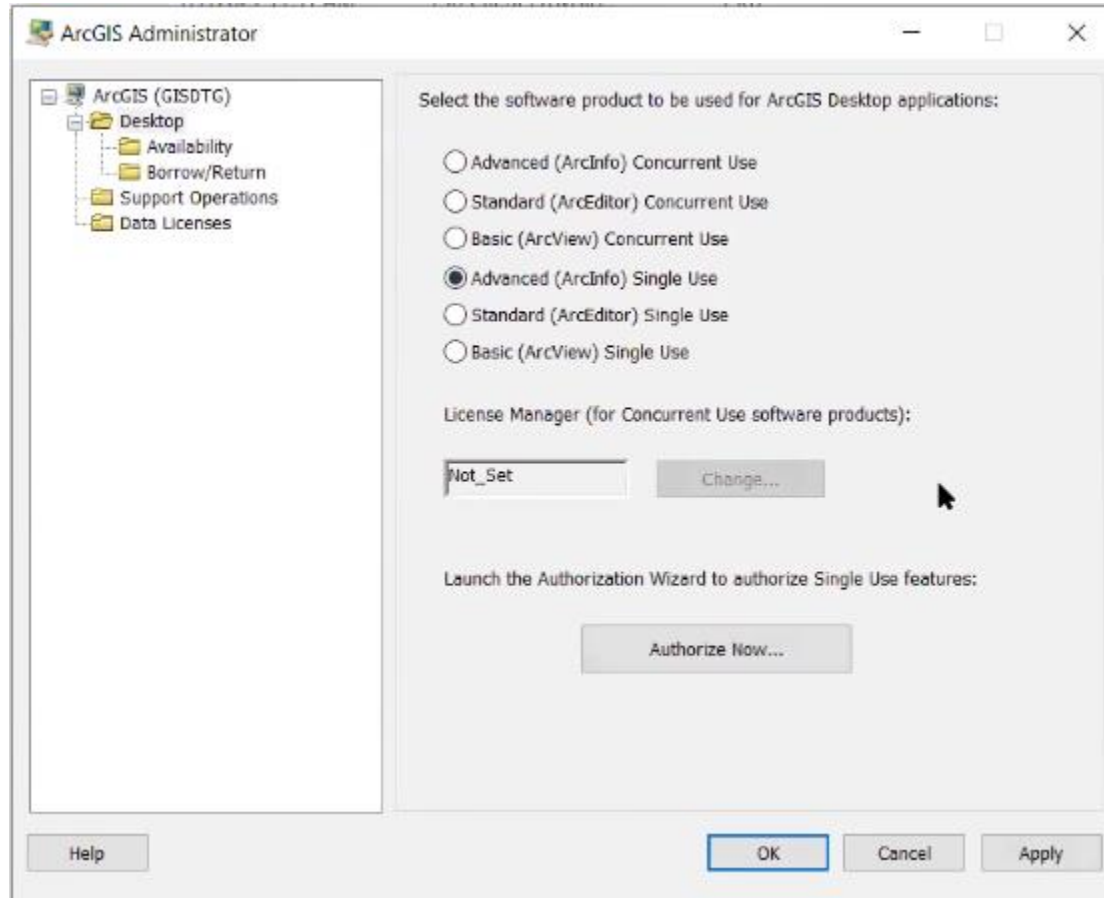
Name	Status	Date modified	Type	Size
 ArcGIS_Desktop_108_172737		1/7/2021 11:13 AM	Application	1,033,957 ...
 EducationSiteArcGISDesktop_SingleUse_990778		1/7/2021 11:31 AM	Esri Client Provisio...	1 KB

3. **Install:** follow the steps outlined at <https://desktop.arcgis.com/en/arcmap/latest/get-started/installation-guide/installing-on-your-computer.htm> to install ArcGIS Desktop (ArcMap) on your machine.

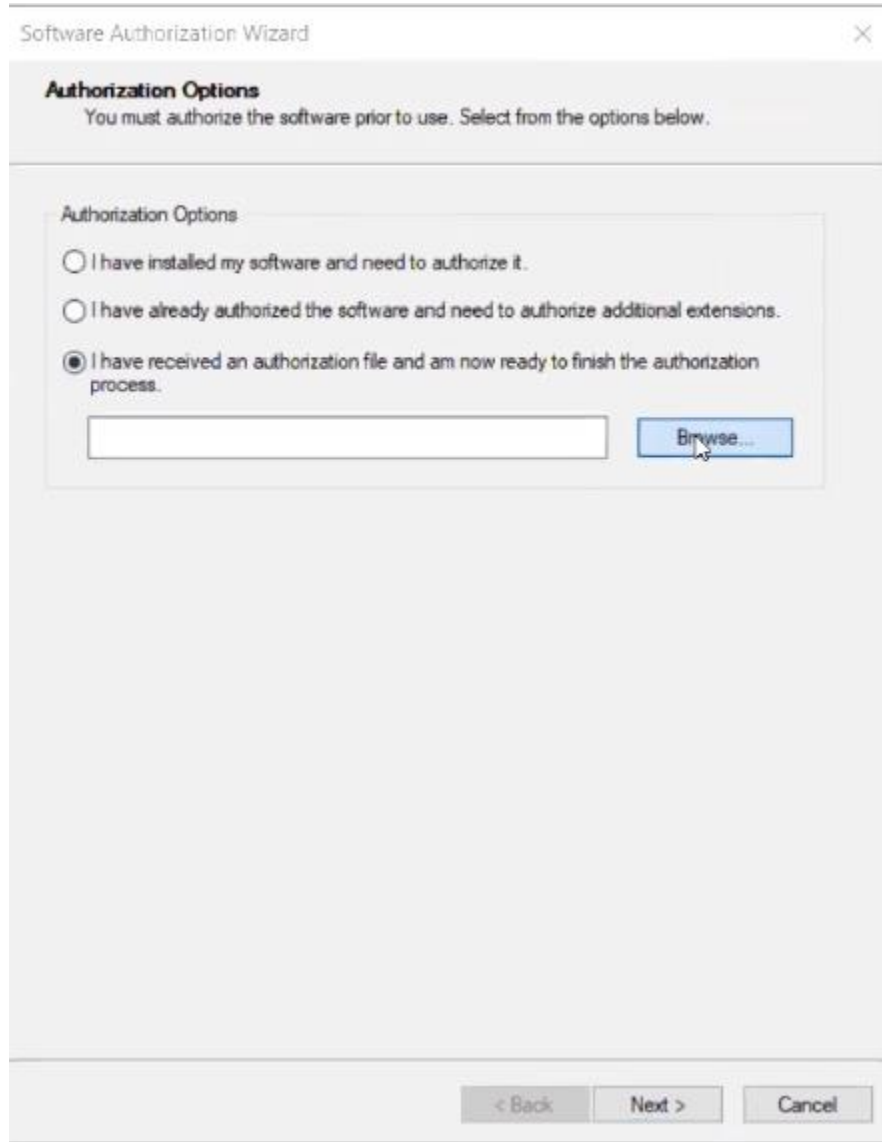
4. **Authorize:** To authorize ArcGIS Desktop (ArcMap) on your machine:
- Find and run ArcGIS Administrator on your machine, image below



- b. Choose “Desktop”, then click the “Advanced (ArcInfo) Single Use” radio button, then “Authorize Now...”, image below



- c. Choose the “I have received an authorization file and am now ready to finish authorization process” , then find the 1K provisioning file and attach it, then go through the steps leaving the defaults, images below



Software Authorization Wizard

Authorization Method
Select the method you want to use to authorize the software.

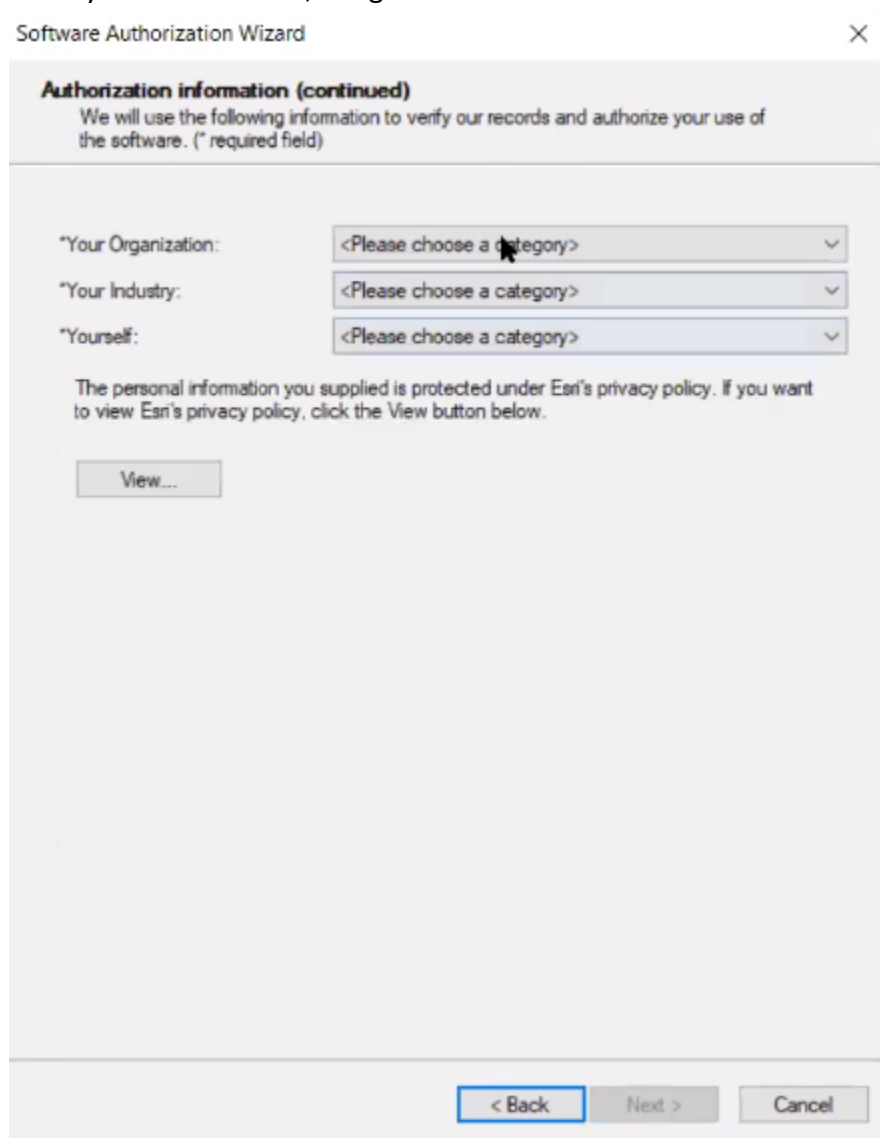
☒ Authorize with Esri now using the Internet.
(This automatic method is the easiest way to authorize. It requires an Internet connection.)

☐ Authorize at Esri's website or by email to receive your authorization file.

☐ Authorize your software from a local license server.

< Back Next > Cancel

- d. Fill in your information, image below



The image shows a 'Software Authorization Wizard' dialog box. The title bar says 'Software Authorization Wizard' with a close button (X) on the right. The main content area has a header 'Authorization information (continued)' followed by a note: 'We will use the following information to verify our records and authorize your use of the software. (* required field)'. Below this, there are three required fields, each with a dropdown menu: '*Your Organization:', '*Your Industry:', and '*Yourself:'. All three dropdowns currently show '<Please choose a category>'. Below these fields is a paragraph: 'The personal information you supplied is protected under Esri's privacy policy. If you want to view Esri's privacy policy, click the View button below.' and a 'View...' button. At the bottom of the dialog, there are three buttons: '< Back' (highlighted with a blue border), 'Next >' (disabled), and 'Cancel'.

Software Authorization Wizard

Authorization information (continued)
We will use the following information to verify our records and authorize your use of the software. (* required field)

*Your Organization: <Please choose a category>

*Your Industry: <Please choose a category>

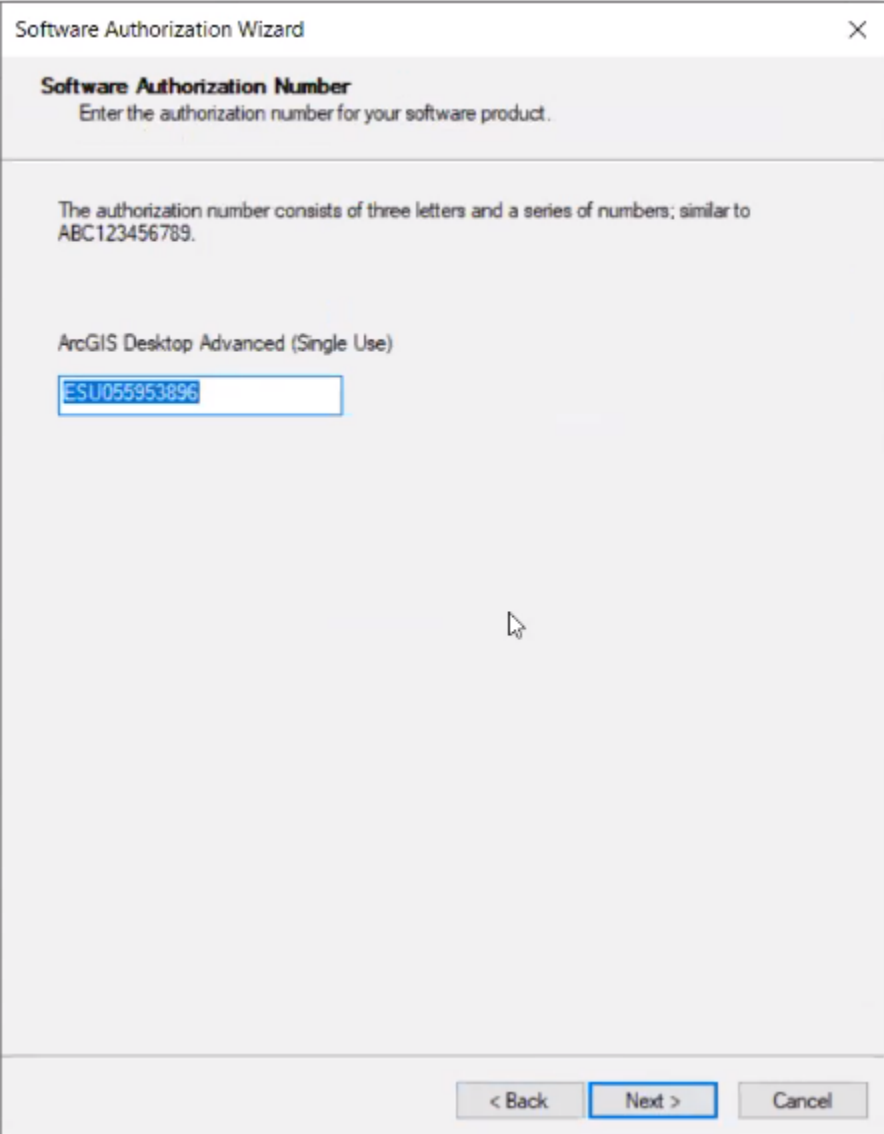
*Yourself: <Please choose a category>

The personal information you supplied is protected under Esri's privacy policy. If you want to view Esri's privacy policy, click the View button below.

View...

< Back Next > Cancel

- e. You will see the screen below



The image shows a 'Software Authorization Wizard' dialog box. It has a title bar with a close button. The main content area is divided into sections. The first section is titled 'Software Authorization Number' and contains the instruction 'Enter the authorization number for your software product.' Below this, a text box contains the authorization number 'ESU055953896'. The second section is titled 'ArcGIS Desktop Advanced (Single Use)'. At the bottom of the dialog box, there are three buttons: '< Back', 'Next >', and 'Cancel'. The 'Next >' button is highlighted with a blue border.

Software Authorization Wizard

Software Authorization Number
Enter the authorization number for your software product.

The authorization number consists of three letters and a series of numbers; similar to ABC123456789.

ArcGIS Desktop Advanced (Single Use)

ESU055953896

< Back Next > Cancel

- f. Fill in the authorization numbers as seen below

Software Authorization Wizard

Authorize Software Extensions
Please select an option below.

Options

☐ I do not want to authorize any extensions at this time.

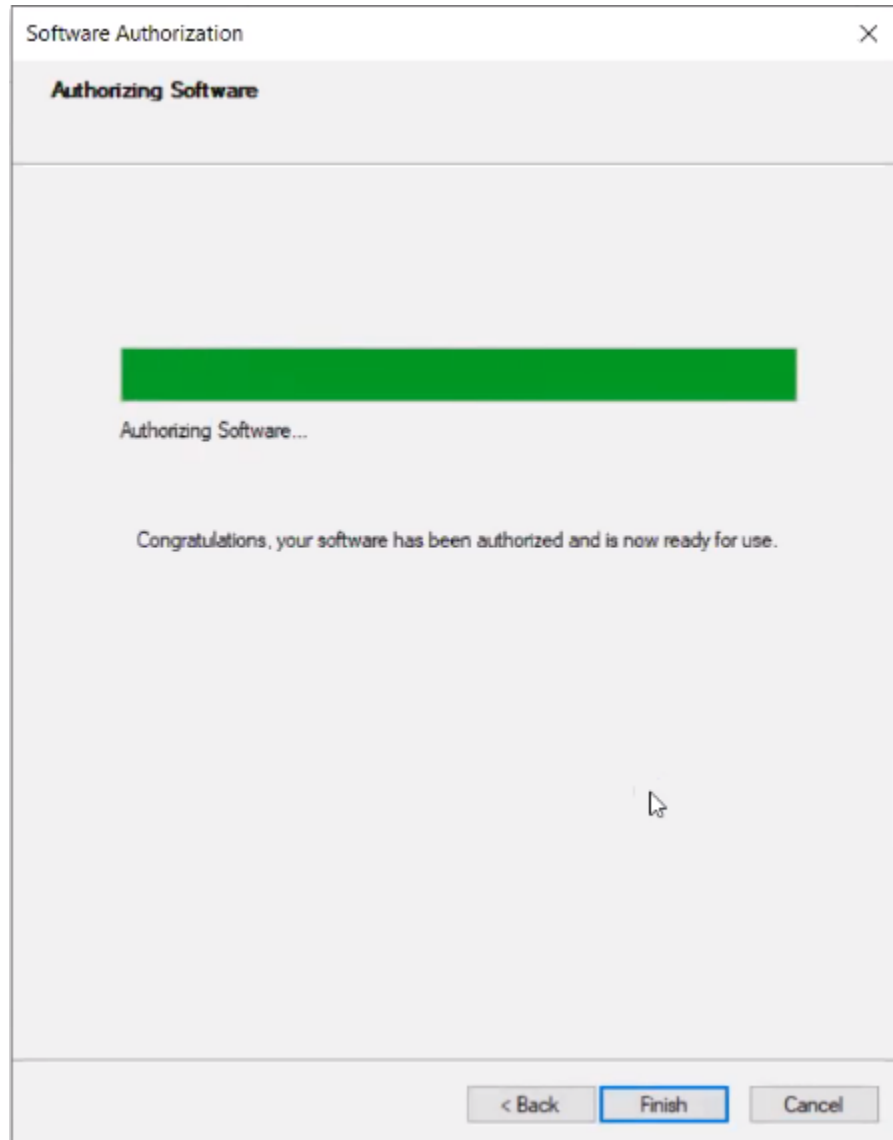
☒ I have authorization number(s) to authorize one or more extensions.

Extensions

Feature	Authorization Number
3D Analyst	ESU055953896
Spatial Analyst	ESU055953896
Network Analyst	ESU055953896
Publisher	
Data Interoperability	
Geostatistical Analyst	
Tracking Analyst	
Schematics	
Full Motion Video	
Workflow Manager	
Data Reviewer	
Business Analyst Premium	ESU930653900
LocateXT	ESU036907208

< Back Next > Cancel

- g. Click through one or two screens and you should see the authorization confirmation screen, image below



- h. Congratulations! You've installed and authorized ArcGIS Desktop (ArcMap) on your machine! Now go learn some GIS 😊